



8-16 November  
QUALIFYING SERIES 5000  
**ATHLETES GUIDE**



# TABLE OF CONTENTS

- 01 COMPETITION DETAILS
- 02 EVENT LOCATION
- 03 LOCAL INFORMATION
- 04 HOW TO GET THERE
- 05 WHERE TO STAY
- 06 MEDICAL FACILTIES
- 07 CONTACTS



# 01 COMPETITION DETAILS

## NOVEMBER 8

Opening Ceremony for the 2024 Taiwan Open of Surfing at the main stage at 2 p.m. All participants are welcome and encouraged to attend.

## NOVEMBER 9-16

2024 Taiwan Open of Surfing Men's and Women's QS 5,000. The event will be held over an 8-day window.

- Men's QS5,000 total prize money: AUD\$50,000
- Women's QS5,000 total prize money: AUD\$50,000



20% Tax Will Be Deducted from All Prizes

## EVENT REGISTRATION

This is a dual-sanctioned Asia & Australia/Oceania Region event. Register through Member Pro:

<https://wsl.memberpro.net/main/body.cfm>





# GENERAL SCHEDULE



NOVEMBER 15-16

## BBQ

A BBQ will be held during the event.  
All participants are welcome to join.



NOVEMBER 15

Welcome Party  
All participants are invited to  
attend the Welcome Party at  
Jinzun Harbor.



NOVEMBER 16

Concert  
A concert featuring a local  
Taiwanese band and DJ will be  
held during the event.



## 02 EVENT LOCATION



Taitung County is located on the east coast of Taiwan.

Forget your troubles while wandering through Taitung's multitude of landscapes that include high mountains, a rift valley, and scenic views of the Pacific Ocean. We hope that everyone can fully experience Taitung's slow pace of life and all that this beautiful place has to offer.

More information about [TAITUNG](#)



## CONTEST SITE



### JINZUN HARBOR



- Free parking is available next to the event site. (Parking is Limited)
- Drinks and food will be available all day at the event.
- Welcome party will be held on Nov 15.


Watch the [LIVE CAM](#) 

## OVERVIEW OF CONDITIONS

- Water Temp 20-24°C / Air Temp 16-22°C / 19°C-22°C ( 67°F 73°F )
- Local information: <https://tour.taitung.gov.tw/en/experience/Surfing>
- Ideal swell directions: North-East, East-North-East
- Ideal wind direction: North-East
- Ideal swell size: Starts working at less than 1m/3ft and holds up to 2.5m/6ft+
- Ideal tide: All tides
- Ideal tidal movement: Rising and falling tides
- Left and righthand beach break.

More information can be found at:

[Central Weather Bureau](#)

[Surfline](#) 



## 03 LOCAL INFORMATION

### CURRENCY EXCHANGE

\$\$ We suggest obtaining NTD before arriving in Taiwan \$\$



[Google Map](#)



臺灣銀行 BANK OF TAIWAN

Tel. : +886-89-324201

Address: No.373,Sec.1,Zhonghua Rd., Taitung City,  
Taitung County 950, Taiwan (R.O.C.)

[Foreign Exchange Rate](#)



### TAIWAN TAX REFUND

- Time limit: Within 90 days of purchase.
- Location: Electronic Automatic Refund Machine of the Tax Refund Service Center, or the Foreign Passenger VAT Refund Service Counter at the Customs Service Counter.

[Content](#)

[Procedures](#)

[E-VAT Kiosk](#)



### OTHER INFORMATION

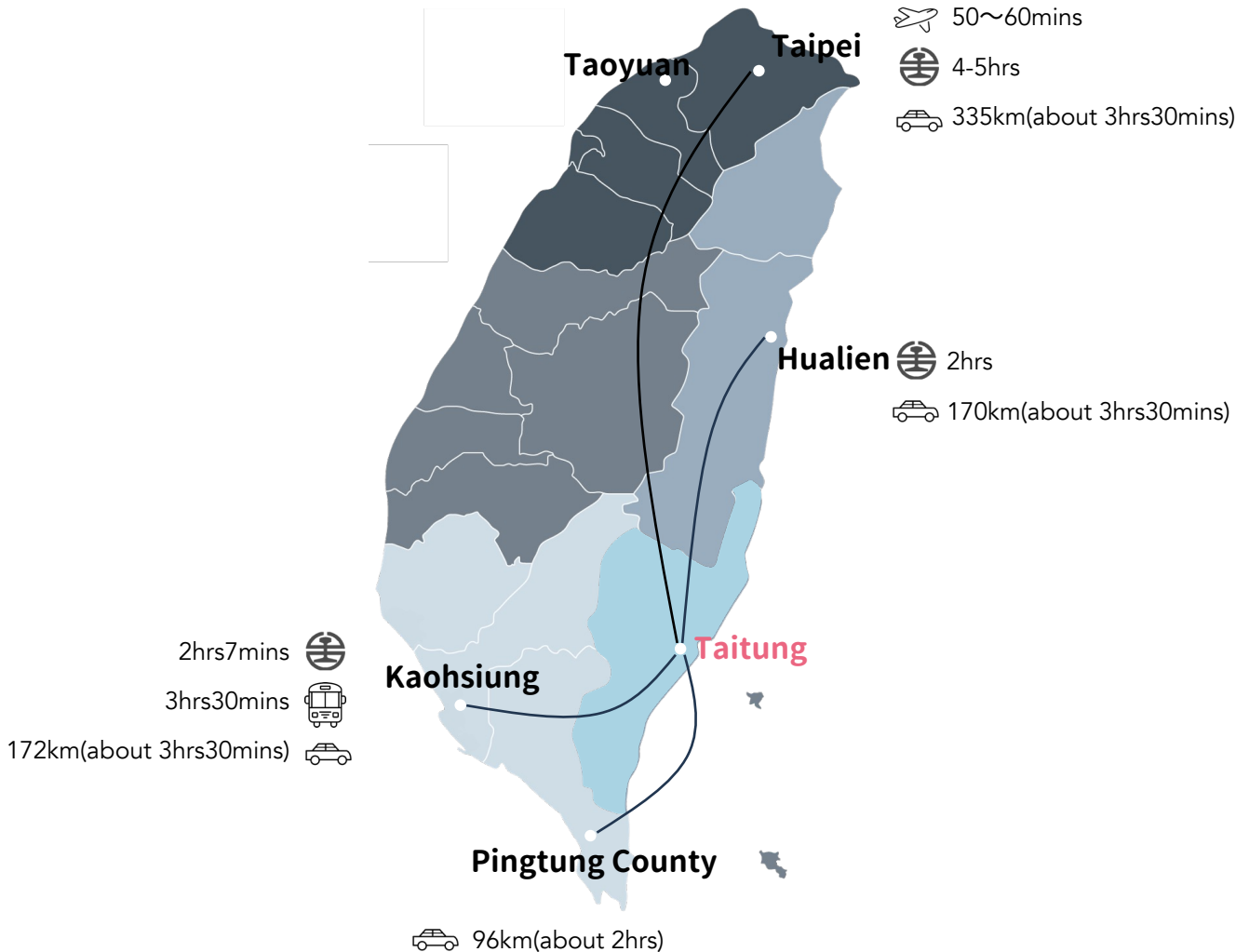
- Local time zone: Time GMT + 08:00
- Country calling code : +886
- Travel adaptor: Outlets in Taiwan are 110 V Type A and B

[More Information](#)





## 04 HOW TO GET THERE



## TRAVEL INFORMATION

To arrive at Jinzun Harbor, participants will need to travel 4-6 hours after flying to Taoyuan International Airport (TPE) or Kaohsiung International Airport (KHH).



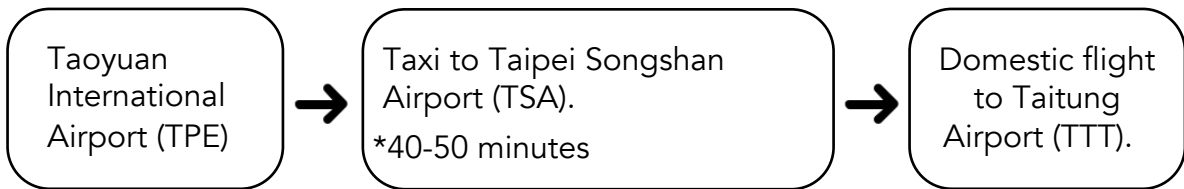
Due to a severe earthquake earlier this year, certain roads and structures are still under repair. For your safety, please try to avoid driving from Taipei to Taitung.



## ARRIVAL (IATA) TPE



### Option A — Domestic Flight



Notice: The distance from Taipei to Taitung City is about 330 km.

There are about 6-7 flights a day from Songshan Airport to Taitung Airport, operated by [UNI AIR](#) and [MANDARIN AIR](#).

Flight time is about 1 hour. Flights range from NTD2,460 to NTD2,579.

*Advance noticed is required to check board bags.*



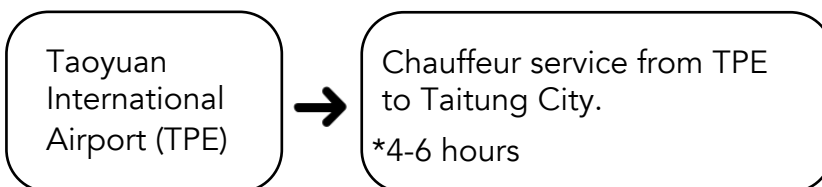
**Book your flight ticket online:**

[UNI AIR](#)

[MANDARIN AIR](#)



### Option B — Airport Chauffeur Service



Notice: Hire a car directly from Taoyuan International Airport to Taitung City NT\$8000-NT\$13000 (US\$251-US\$408).

Estimated price. Can change without notice.

Contact for details and reservations:

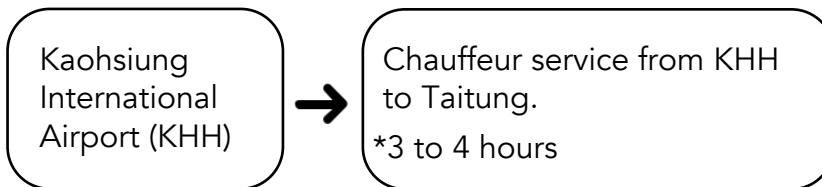


[info@taiwanopenofsurfing.org](mailto:info@taiwanopenofsurfing.org)

## ARRIVAL (IATA) KHH




### Option A — Airport Chauffeur Service

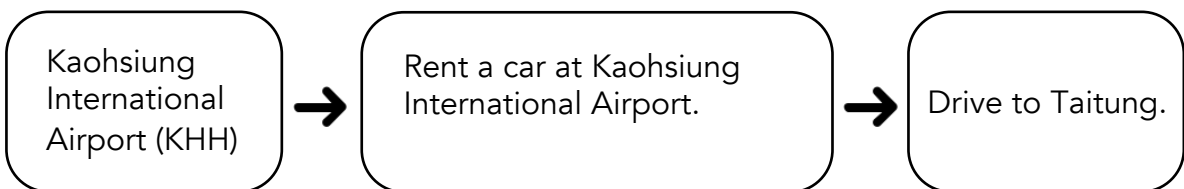


Notice: Hire a car directly from from Kaohsiung International Airport to Taitung City  
NTD\$6000-NTD\$13000 (US\$187-US\$404).  
Estimated price. Can change without notice.

Contact for details and reservations:

 [info@taiwanopenofsurfing.org](mailto:info@taiwanopenofsurfing.org)

### Option B — Rent a car



Please check vehicle's storage specifications beforehand, or bring your own surfboard roof rack.



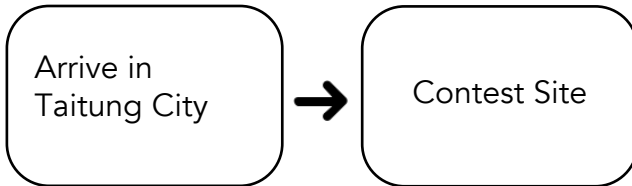
More car rental information can be found at: [Car Plus](#)

[Easy Rent](#)

[IWS Rent-a-Car](#)



## AFTER ARRIVING IN TAITUNG CITY



The distance from Taitung City to contest site is about 36 km.  
The trip takes 40-50 mins by car.

- Rent a car in Taitung City

Please check vehicle's storage specifications beforehand, or bring your own surfboard roof rack.

- Accommodation for surfers can provide further information on transportation



**More car rental information can be found at:** [Car Plus](#)

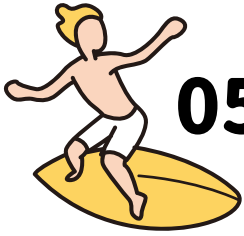
[Easy Rent](#)

[IWS Rent-a-Car](#)



[International Driving License](#)

Please check the rules of driving internationally before renting a car.



## 05 WHERE TO STAY



 Jinzun Fishing Harbor, Donghe Township, Taitung County, Taiwan



More information on Taitung County hotels can be found at:

[Accommodation in Taitung City](#)

[Accommodation near the event venue](#)







## 06 MEDICAL FACILITIES



**馬偕紀念醫院**  
MacKay Memorial Hospital



[Google Map](#)



[Website](#)



+886-89-310150



Address:

No. 1, Ln. 303, Changsha St., Taitung City, Taitung County 950408 , Taiwan (R.O.C.)



Ministry of Health and welfare  
**TAITUNG HOSPITAL**



[Google Map](#)



[Website](#)



+886-89-324112



Address:

No. 1, Wuquan St, Taitung City, Taitung County 959408, Taiwan (R.O.C.)



## 07 CONTACTS

### Taiwan Open of Surfing (TAITUNG, TAIWAN)

Kathy Tang

Director

☎ +886 973 187 978

✉ kathy@taiwanopenofsurfing.org

Chucky Tsai

☎ +886 916 234 135

✉ chucky@taiwanopenofsurfing.org

### World Surf League (WSL) Asia Pacific (APAC)

Ty Sorati

Tour Manager

☎ +61 428 412 732

✉ tsorati@worldsurfleague.com

Bonnie Macloed

☎ +61 411 700 942

✉ bmacloed@worldsurfleague.com

### Taiwan Open Hospitality

Stephanie

Assistant Manager

☎ +886 955 697 200

✉ info@taiwanopenofsurfing.org



[Official Website](#)



[Facebook](#)



[Instagram](#)





# 喝水不夠 喝FIN就好



日本專利  
**L-137**  
植物乳酸菌

FIN 等滲透壓與人體較接近 | 迅速補充水分及電解質



# BILLABONG



*know the feeling*



BILLABONG TAIWAN  
FACEBOOK





INTERNATIONAL  
MASTERS GAMES  
ASSOCIATION



WORLD  
MASTERS  
GAMES  
雙北世界壯年運動會  
2025  
TAIPEI CITY  
NEW TAIPEI CITY



# 2025 雙北世界壯年運動會 WORLD MASTERS GAMES

2024年2月17日  
開始報名



運動無界 | 人生無限

SPORTS beyond AGE! LIFE without LIMITS!

2025.5.17-30  
和世界挑一場

