



EVENT ATHLETES GUIDE

- Nov 12 – Opening & Athletes Welcome Banquet
 - Nov 13 – 20 Contest Windows
- @ Contest Venue . Jinzun Harbour

TAIWAN OPEN OF 2022 SURFING

臺灣國際衝浪公開賽

JINZUN HARBOUR · TAITUNG 臺東 · 金樽

Nov 12 — 20

Men's Qualifying Series 3,000

Women's Qualifying Series 5,000

- 01 - PRIZE MONEY
- 02 - EVENT LOCATION – about Jinzun
- 03 - LOCAL INFORMATION
- 04 - HOW TO GET THERE
- 05 - WHERE TO STAY
- 06 - EPIDEMIC PREVENTION
- 07 - GOOD TIPS
- 08 - MEDICAL FACILITIES
- 09 - CONTACTS

Men's QS 3000 Prize USD \$30,000

Women's QS 5000 Prize USD \$50,000

(Prize will be deducted 20% Local Tax)

Non-nationals need WSL Insurance

For registration and payments, follow this link: General basic information :

<https://wsl.memberpro.net/main/body.cfm>



Events are open for registration when the Status is [Click here to Register](#).
To register, click on the link labelled [Click here to Register](#),
To show current Registrants click the [+](#) to view.

02 - EVENT LOCATION



more about Taitung

<https://tour.taitung.gov.tw/en>



Jinzun



**WATCH
LIVE
CAMERA**

<https://tour.taitung.gov.tw/en/media/live-camera/37>

02 - EVENT LOCATION

CONTEST SITE

JINZUN HARBOR, TAITUNG COUNTY, TAIWAN  [click here](#)

- Free parking is available next to the event site. (limited parking spots)
- On site catering, Snacks and drinks will be available all day on the event site.
- Welcome party will be held on 11/12.

WEATHER

- Water Temp 20-24°C // Air Temp 16-22°C // 19°C-22°C (67°F 73°F)
- Shorty recommended <https://tour.taitung.gov.tw/en/experience/Surfing>
- Good swell directions : East -North, East -North-East
- Good wind directions : North-East
- Swell size : Starts working at less than 1m/3ft and holds up to 2,5m/6ft+
- Best tide position : All tides
- Best tide movement : Rising and falling tides
- LEFTS AND RIGHTHAND BEACHBREAKS



more information

[Central Weather Bureau](#)
[Surfline](#)

CURRENCY EXCHANGE



Foreign Exchange Rate [click here](#)

Taitung Branch



Tel.

+886-89-324201



Address.

No.373,Sec.1,Zhonghua Rd., Taitung City,
Taitung County 950, Taiwan (R.O.C.)

Google map.

<https://goo.gl/maps/Fh7iRe4kxnga1Hm4A>

NOTICE

- Local time zone : Time GMT + 08:00
- Country calling code : +886
- Travel adaptor : electrical in TAIWAN is
"Type A and B", 110 V
<https://www.power-plugs-sockets.com/taiwan/>



E-VAT Refund website
[click here](#)

TOP 3 TOURS

Chengong Fishing Port Walking Tour

Contact: Angela +886-911-439064

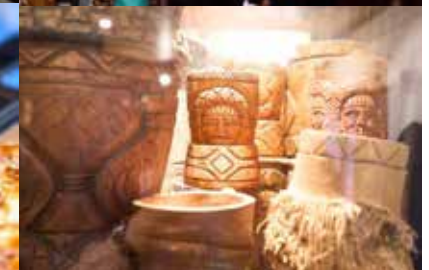


Fugang Community Development Association — Fugang Geopark

Contact: [click here](#)

Tuban Tribal Tour

Contact: Miss Chang +886-965-076729



**MORE INFORMATION
AT THE 2022 TOOS EVENT SITE**

by 心驛耕新關懷協會

04 - HOW TO GET THERE

>>>>>> Arrival (IATA) TPE

Option 1 : (Domestic Flight)

1. >International (TPE) Arrival
2. > International (TPE) > Airport Taxi (45 mins)
3. >Domestic flight TSA (Surfboard Bag-Must give advance notice to your Airline before flight) >Flight Taitung (1hr)
4. >Taitung rent a Car /Airport Taxi / Public Bus (TBD)

Option 2 : (Airport Pick Up) [email us detail and make reservation](#)

1. >International (TPE) Arrival
2. >Airport Pick Up Service(with sign) > (TPE to Taitung door to door)
 - Car model/Per Car : (9P Crafter - NTD\$11200 Approx.USD\$355)
 - Car model/Per Car : (9P Benz V-Class NTD\$9000 Approx.USD\$283)
 - Car model/Per Car : (9Passengers Van NTD\$8500 Approx.USD\$268)
 - Another vehicle: 5P~7P range from NTD\$7500~8000/ Approx.USD\$250-268

Option 3 : (Rent A Car-With valid documents) Note : This way is more convenient to Travel in Taitung , Taiwan.

1. > International (TPE) Arrival
2. > Arrival - sim card/Internet
2. > Airport Taxi (10 mins)
3. > Rent A Car Company Pickup a car

Option 4 : (Arrival Taitung)

1. Option 1 ~ 3
2. > Rent a Car at Taitung
2. > Public Bus to Contest Site (TBD)
3. > Surfers Accommodation provide transportation advice to contest site

**Notice : Surfers needs to bring your own Surfboard car racks in case.

Option 1 : (Airport Pick Up) email us detail and make reservation

1. >International (KHH) Arrival
2. >Airport Pick Up Service(with sign) >(HKK to Taitung door to door)
(estimated price, can change without prior notice)
 - 2-3 people NTD\$6,000 (USD\$ 188.4)
 - 4-10 people NTD\$10,000 (USD\$313.9)
 - 10-20 people NTD\$13,000 (USD\$408.1)

Option 2 : (Rent A Car-With valid documents)

1. > International (KHH) Arrival
2. > Arrival - sim card/Internet
3. > Rent A Car Company Pickup a car

•Note : This way is more convenient to Travel in Taitung Taiwan

**Notice : Surfers needs to bring your own Surfboard car racks in case.

04 - HOW TO GET THERE

From Taoyuan International Airport (TPE)

Option

- A. Rent a car from Taoyuan International Airport and drive down.
- B. Taxi/ pick up service to Taipei Songshan Airport then transfer domestic flight to Taitung.
- C. Taxi/ pick up service from Taoyuan International Airport to Taitung City.



[click here](#)



More information:

[About Taoyuan International Airport](#)

[Entry Process During COVID-19](#)

[Taxi Services From TPE](#)

[Quarantine Taxi Services](#)

[Car Rentals From TPE](#)

[Transportation TPE](#)

[Bus Schedule From TPE](#)

If you need the airport pick up service please make the reservation to [click the link](#)

Please bring your surfboard car rack

04 - HOW TO GET THERE

From Kaohsiung Airport (KKH)

Option

- A. Rent a car from Kaohsiung Airport and drive down.
- B. Taxi/ pick up service from Kaohsiung Airport to Taitung City.
- C. Private transportation from Kaohsiung to Taitung City.

More information:

[About Kaohsiung Airport](#)

[Taxi Services From KKH](#)

[Car Rentals From KKH](#)

[Entry Process During COVID-19](#)

[Transportation KKH](#)



[click here](#)



If you need the airport pick up service please make the reservation to [click the link](#)

Please bring your surfboard car rack

04 - HOW TO GET THERE

From Taipei Songshan Airport to Taitung Airport

Option

A. UNI AIR



[click here](#)

B. MANDARIN AIRLINES



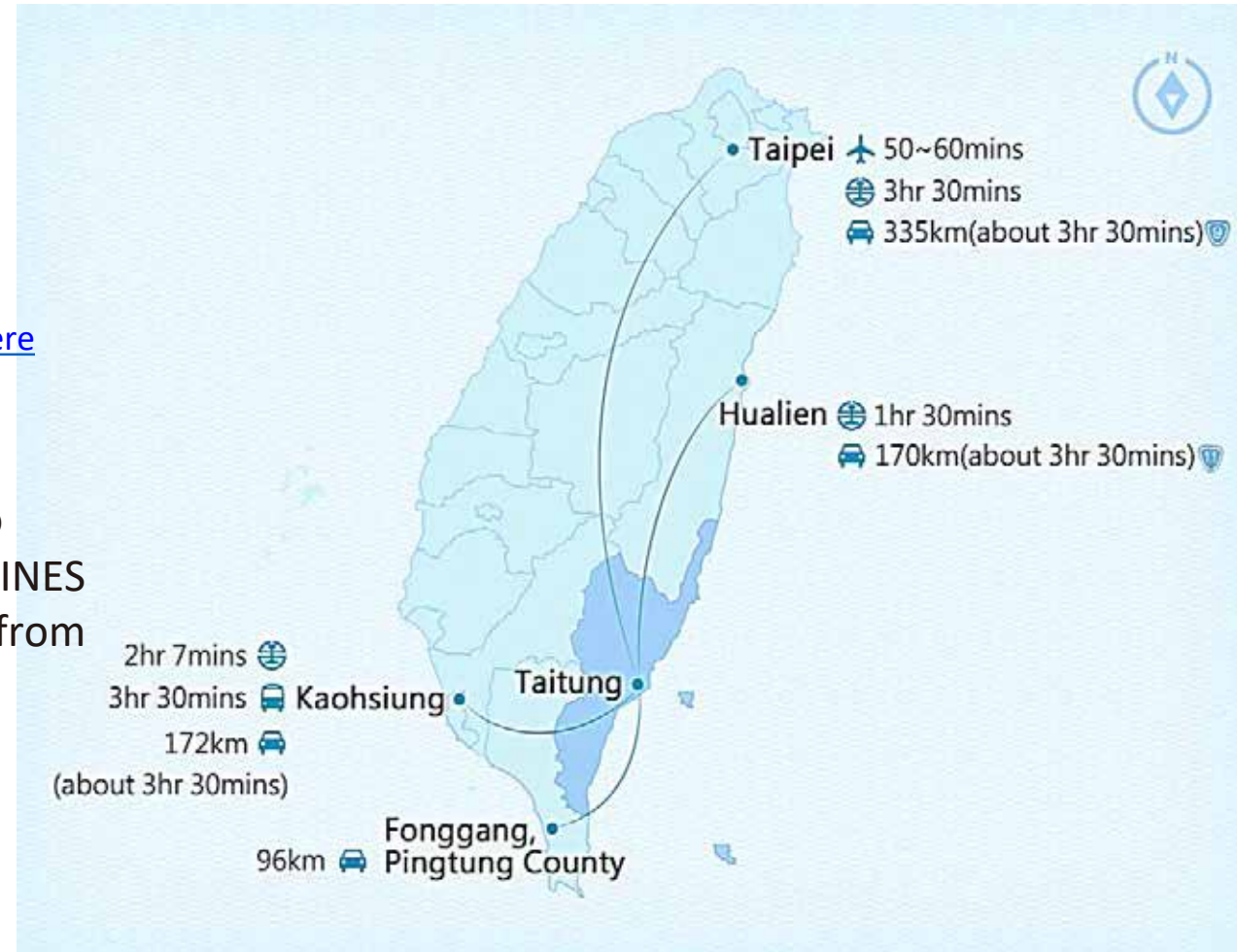
[click here](#)

The distance from Taipei to Taitung is about 330 km. There are about 6-7 flights a day from Songshan Airport to Taitung Airport, operated by UNI AIR and MANDARIN AIRLINES respectively. The flight time is about 1 hour. Flights range from \$1850 to \$2580.

More information:

[About Taipei Songshan Airport](#)

[About Taitung Airport](#)



04 - HOW TO GET THERE



Private transportation

From Kaoshiung Airport to Taitung City & Jinzun

Private transportation from Kaohsiung Airport to Taitung City or contest site Jinzun to door service. It picks you up and leaves you at the exact point requested.

Pick up Vehicle Tel. +886- 913-307085
(estimated price, can change without prior notice)

From KHH to Taitung City

2-3 people NTD\$6,000 (USD\$ 188.4)
4-10 people NTD\$10,000 (USD\$313.9)
10-20 people NTD\$13,000 (USD\$408.1)

From hotel to Contest area

10-20 people NTD\$9,000 (USD\$282.5)

04 - HOW TO GET THERE

Rent A CAR

Overseas Driving License
[click here](#)



Please bring your surfboard car rack



EASY RENT
Taitung Station

Book Online
[click here](#)



+886-800-288-568
No. 16, Ln. 106, Xinzhan Rd.,
Taitung City,
Taitung County



格上租車

CAR PLUS
Taitung Station

Book Online
[click here](#)



+886-800-222-568 #2
No. 243,, Xinzhan Rd.,
Taitung City,
Taitung County



愛旺租車

IWS RENT-A-CAR
Taitung Station

Book Online
[click here](#)



+886-800-288-568
No. 221, Xinzhan Rd.,
Taitung City,
Taitung County



cwyeh@iws.com.tw
iws2fdatabase@gmail.com

Inn By The Village

Reservations.

[Event Guests Booking](#)

Email.

reservation-tu@tyq.com.tw

Tel.

+886-89-328160

Address.

No.585, Sec. 1, Zhonghua Road, Taitung City, Taiwan

Google map.

<https://g.page/nftaitung?share>



Taitung County Hotel

<https://www.facebook.com/ttp.hotel/>

Directly booking Email.

szu600632@gmail.com

Tel.

+886-89-310142

Address.

No. 19, Nanjing Rd., Taitung City, Taitung
County 950224 , Taiwan (R.O.C.)

Google map.

<https://goo.gl/maps/JAtenjevEjanzH9y6>



MORE HOTELS IN TAITUNG [click here](#)

06 - EPIDEMIC PREVENTION



Taiwan Centers for Disease Control
衛生福利部疾病管制署

English Press Releases – International Arrivals : [click here](#)

English Press Releases – Taiwan Current Mask Prevention Measures : [click here](#)

Quarantine will be ended,
but a seven-day self-initiated epidemic
prevention will be required.

International Arrivals

Four(4) rapid test kits will be given to arrivals



Arrival 0 / D1 & 2 * Negative *

Positive require 1 room



Keep hands clean Take temperature



Wear a mask Maintain social distance

06 - EPIDEMIC PREVENTION

Online Visa Form >>>>>>
General Visa Applications - Tourism

[Please Click Here](https://visawebapp.boca.gov.tw/BOCA_EVISA/) https://visawebapp.boca.gov.tw/BOCA_EVISA/

2022 Visa-Exempt Entry

More Information>> <https://www.boca.gov.tw/cp-149-4486-7785a-2.html>
BUREAU OF CONSULAR AFFAIRS, MINISTRY OF FOREIGN AFFAIRS, REPUBLIC OF CHINA(TAIWAN)

Type	Visa-Exempt Entry
Applicable foreign nationals starting from September 12, 2022	<ol style="list-style-type: none">1. Nationals of the following countries are eligible for the visa exemption program, with a duration of stay of up to <u>90</u> days: Andorra, Australia, Austria, Belgium, Bulgaria, Canada, Croatia, Cyprus, Czech Republic, Denmark, Estonia, Eswatini*, Finland, France, Germany, Greece, Guatemala, Haiti, Honduras*, Hungary, Iceland, Ireland, Italy, Latvia, Liechtenstein, Lithuania, Luxembourg, Malta, Marshall Island*, Monaco, Netherlands, New Zealand, North Macedonia*(effective till March 31, 2025), Norway, Palau, Paraguay, Poland, Portugal, Romania, San Marino, Slovakia, Slovenia, Spain, Sweden, Switzerland, Tuvalu*, the United Kingdom, the United States of America*, and Vatican City State.2. Nationals of the following countries are eligible for the visa exemption program, with a duration of stay of up to <u>30</u> days: Belize*, Nauru, St. Kitts and Nevis*, Saint Lucia*, Saint Vincent and the Grenadines.

06 - EPIDIDEMIC PREVENTION

2022 Contest /Main Venue / access Procedures.

- Competitors/ Judge
- Surfers (during water activities)

Are not required to wear a mask, but should carry a mask.

- Staffs
- Guests
- Non - Competitors
- Others

Entry contest zone wear a mask.



Entry Contest Zone

Update & Publish
Time : 2022-07-19

Prevention Subject to change, please refer to the Taiwan Current Mask Prevention Measures [CLICK HERE](#)

Appendix





<https://ttw3.mmh.org.tw/>

Tel.

+886-89-310150

Address.

No. 1, Ln. 303, Changsha St., Taitung City,
Taitung County 950408 , Taiwan (R.O.C.)

Google map.

<https://goo.gl/maps/xZHY15tk6g7sg5nx7>



<https://www.tait.mohw.gov.tw/english/?aid=home>

Tel.

+886-89-324112

Address.

No. 1, Wuquan St, Taitung City, Taitung County, 950

Google map.

<https://goo.gl/maps/CUf69xUX6MEKSicG6>

World Surf League (WSL) Asia Pacific (APAC)

Ty Sorati
Tour Manager
+61 428 412 732
tsorati@worldsurfleague.com

Bonnie Macloed
+61 411 700 942
bmacloed@worldsurfleague.com

Taiwan Open of Surfing (TAITUNG. TAIWAN)

Kathy Tang
Director
+886 973 187 978
kathy@taiwanopenofsurfing.org

Chucky Tsai
+886 916 234 135
chucky@taiwanopenofsurfing.org

Winston Tsai (OnSite)
+886 955 023 065
Winston@taiwanopenofsurfing.org

Taiwan Open Hospitality (SUN FISH)

Aslin Huang
Assistant Manager
+886 910 245 687
surf.sunfish@gmail.com

Official website

Facebook

Instagram

<http://www.taiwanopenofsurfing.org>

<https://www.facebook.com/taiwanopenofsurfing/>

<https://www.instagram.com/taiwanopenofsurf/>

今天想要
哪對翅膀？





喝水不夠 喝FIN就好

迅速補充
水分及電解質



添加L-137
植物乳酸菌



ROXY



QUICKSILVER